

430G Pneumatic Hammer



Operating and Maintenance Instructions



Read and Understand Operating Instructions
Before Operating Tool

Elliott Tool Technologies Ltd • 1760 Tuttle Avenue • Dayton, Ohio 45403 U.S.A.
Phone: +1 800 332 0447 • +1 937 253 6133 • Fax: +1 937 253 9189

Elliott Tool Technologies UK Limited • Broadstone Hill • Old Chalford • Chipping Norton • OXON • OX7 5QL • England
Phone: +44 (0) 1608 672815 • Fax: +44 (0) 1608 672810

TABLE OF CONTENTS

Introduction / Safety Instructions	2
Specifications	2
Service Notes	3

PARTS DIAGRAM & INSTRUCTION SHEET

ELLIOTT MODEL 430G PNEUMATIC HAMMERS

The Elliott Model 430G Pneumatic Hammers are TOP QUALITY, AMERICAN MADE Tools. They are designed to perform with a minimum of maintenance, on your most demanding applications. The goal of Elliott is to produce tools that help you work safely and efficiently. The most important safety device for this or any tool is YOU. Your care and good judgment are the best protection against injury. You can greatly extend the life of the tool, and insure the safety of the operators, by following a few simple guidelines.

FIRST AND FOREMOST: the use of other than genuine Elliott parts may compromise your tools performance, operator safety, and also lead to higher than normal maintenance and repair.

SAFETY INSTRUCTIONS

All Elliott Pneumatic Hammers should be operated and maintained in accordance with the American National Standards Institute Safety Code for Portable Air Tools (ANSI B186.1) and any other applicable safety codes and regulations. B186.1 information is available from National Standards Institute, Inc., 11 W 42nd Street, New York, NY 10036.

1. PROJECTILE HAZARDS: Always wear safety glasses to prevent the loss of sight or injury from flying projectiles when operating power tools. To prevent chisel ejection and injury to yourself or to bystanders NEVER operate the tool off the work or without a chisel retainer securely in place.
2. Hearing Loss can result from prolonged exposure to excessive sound levels. ALWAYS use approved hearing protection.
3. Avoid contact with accessories during and after use, as they may be HOT. Always wear gloves to prevent burns and cuts.
4. To prevent injury from whipping hoses ALWAYS inspect hoses, couplings, and fittings to be sure they are in good condition and are properly tightened. When using Universal Hose Couplings, lock pins MUST be installed to prevent accidental hose disconnects.
5. DISCONNECT the tool from the air supply when not in use or when changing chisels or accessories, or when making repairs. This practice will help prevent injury from accidental tool starts.
6. TO REDUCE THE RISK OF INJURY, ALL Operators and Maintenance personnel MUST READ AND UNDERSTAND these instructions BEFORE OPERATING, CHANGING ACCESSORIES OR PERFORMING MAINTENANCE ON THIS TOOL. ALL POSSIBLE SITUATIONS CANNOT BE COVERED HERE, BUT CARE MUST BE EXERCISED BY EVERYONE USING, MAINTAINING, AND WORKING NEAR THIS TOOL.

SPECIFICATIONS

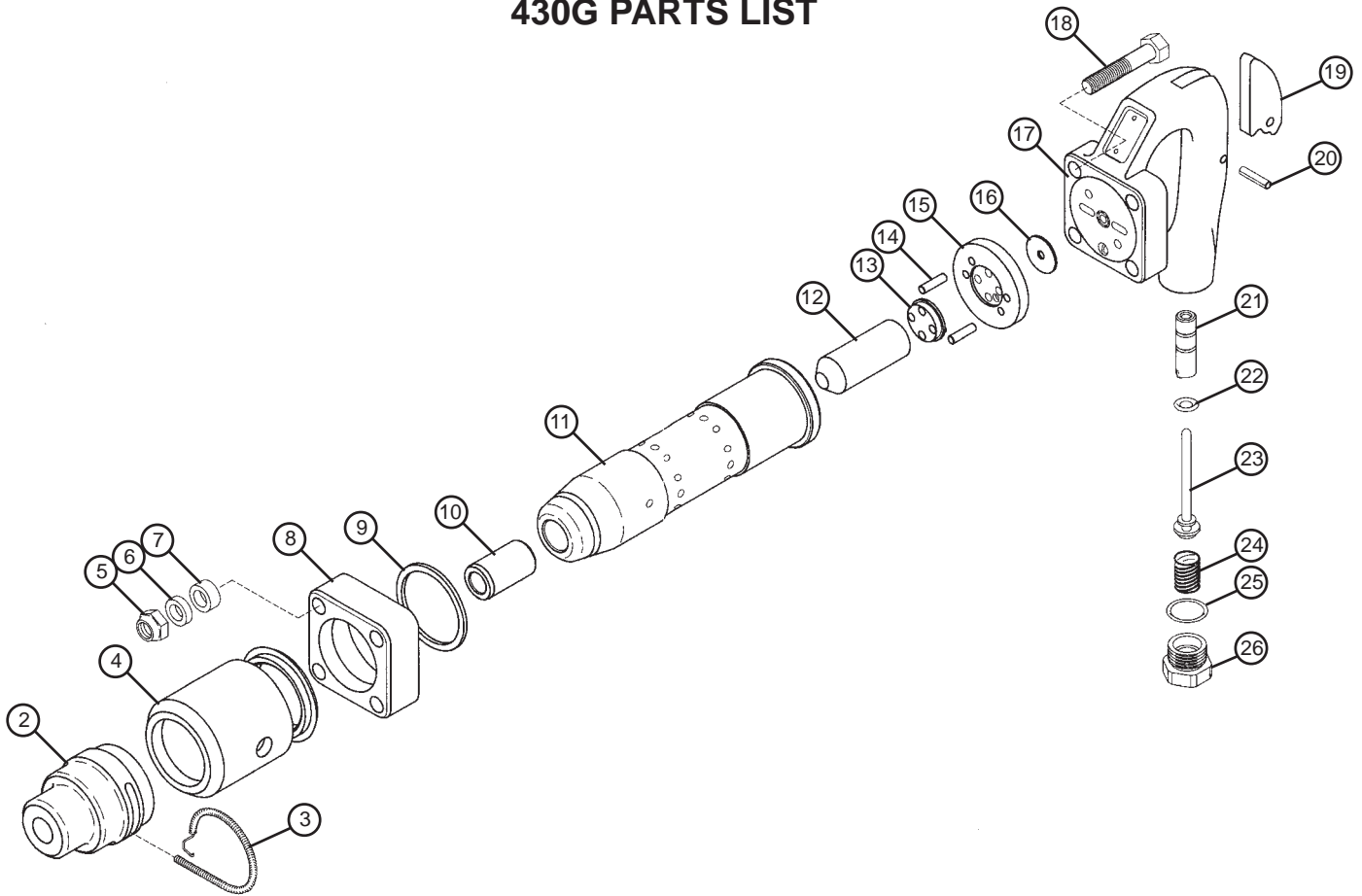
RECOMMENDED AIR PRESSURE:	90 PSI (6.2 bar) MAXIMUM AIR PRESSURE
REQUIRED AVAILABLE CFM:	30 CFM (per tool being operated)
RECOMMENDED HOSE SIZE:	1/2" HOSE WHIP, 25 FT. MAXIMUM LENGTH 3/4" SUPPLY HOSE FOR LONGER RUNS

For questions concerning the operation and maintenance of Elliott Pneumatic Hammers contact:
Elliott Tool Technologies • 1760 Tuttle Avenue • Dayton, Ohio 45403-3428 USA
Phone: 937-253-6133 • 1-800-332-0447 • Fax 937-253-9189

ELLIOTT MODEL 430G PNEUMATIC HAMMER SERVICE NOTES

1. To remove the exhaust deflector: With barrel removed from tool, mount barrel assembly nozzle side up in an arbor press, supported only by the barrel flange. Make sure there is adequate clearance underneath the barrel to press the barrel through the flange, forcing the exhaust deflector off in the process.
2. To install the exhaust deflector, use Elliott P/N 35-3CH932 installation tool to press deflector over the barrel. Make sure the barrel flange and absorber ring are installed prior to installing the deflector.
3. Do not attempt to remove the threaded pipe plugs in the handle. These are air passage closures only and are permanently installed.
4. To remove and replace the nozzle bushing, use Elliott P/N 35-3CH931 bushing removal tool. (requires an arbor press)

430G PARTS LIST



Item No.	Part No.	Part Name	Qty.
1	430G	Pneumatic Hammer	
2	35-250012-525	Retainer	1
3	35-250012-529	Retainer Lock Spring	1
4	35-250027-499	Exhaust Deflector	1
5	35-250027-497	Handle Bolt Nut	4
6	35-250027-496	Handle Bolt Spacer	4
7	35-250027-495	Vibration Spacer	4
8	35-250027-494	Barrel Flange	1
9	35-250027-493	Absorber Ring	1
10	35-B01-19B	Bushing, Round	1
11	35-2CH-AR106	Barrel	1
12	35-250027-500	Piston	1
13	35-250027-480	Valve Seat Bumper	1
14	35-250027-481	Pin	2
15	35-250027-482	Valve Seat	1
16	35-250027-483	Disc Valve	1
17	35-250027-484	Bare Handle, Steel*	1
18	35-250027-485	Bolt	4
19	35-250027-486	Trigger*	1
20	35-0481	Pin*	1
21	35-250027-487	Valve Stem Bushing*	1
22	35-250027-431	O-Ring*	1
23	35-250027-488	Throttle Valve*	1
24	35-250027-489	Valve Spring*	1
25	35-250027-490	O-Ring*	1
26	35-27505	1/2" NPT Inlet Bushing*	1

*Complete Handle Assembly 35-3CH-1A includes all of these items.



***tube
expanders***

- Boiler Expanders
- Heat Exchanger Expanders
- Condenser Expanders
- Refinery Expanders

***tube rolling motors
& torque controls***

- Electric
- Pneumatic

***tube
cleaners***

- Air & Water Driven Motors
(Internal/External Drives)
- Jiffy Guns
("Shoot-Thru" Devices)
- Roto-Jet
(Rotating Flex Shaft)

***additional
products***

- Tube and Joint Testers
- Tube Plugs
(High & Low Pressure)

***retubing
tools***

- Tube Gauges
- Tube Cutters
- Manual Tools
- Spear Type Tube Pullers
- Collet-Type Tube Pullers
- CYCLGRIP Tube Extractors
- Grooving Tools
- End-Prep Tools

***metal working
products***

- Back Chamfering Tools
- Carbide Roller Burnishing Tools
- Diamond Burnishing Tools
- Elliptical Deburring Tools
- Fine Boring Tools
- Internal Recessing Tools
- Magic Vise
- Mechanical Joining Tools
- Roller Burnishing Tools
- Single Blade Reamers

